

A manse for all seasons

Refurbishing rooms in their former Church of Scotland home in Killearn has been an ongoing process for the past 35 years

Words **Heather MacLeod** Photographs **Robert Perry**





Clockwise from far left: streamlined ingenuity in the kitchen; a half-height wall separates the kitchen from the eating area; Sandy and Trish in the sitting-room

GIVEN THAT I've lived in their Killearn home for 35 years, they could be forgiven for regarding their living space as a comfy pair of slippers.

But Trish has refurbished various rooms in the former manse on a regular basis, and for the past 12 years has enlisted the help of interior designer, Margot Paton, owner of Chelsea Mc Laine in Bearsden. "When we first moved in, the kitchen was divided into three

rooms, so we knocked through and created a family room and sizeable kitchen, while upstairs we turned three rooms into the master bedroom with en suite and dressing room," says Trish.

Now retired, with three grown-up children, the couple first came across the former Church of Scotland manse when they moved to the area and attended a Christmas function at the detached blonde sandstone property, with Sandy saying he'd like to live there. Six

months later his wish was granted when the house came up for sale.

Built in 1840, the manse became a private home at the beginning of the last century, but a date stone on one of the outbuildings is inscribed 1671, and Trish says the lower part of the house was built in 1815. The 21st-century layout takes in a dining-room, drawing-room, sitting-room, with substantial kitchen/living/dining-room all on the ground floor, three →



↔ bedrooms upstairs, and a study and bedroom on the top level.

When they moved in they got a bit of a shock. "We couldn't even fit our table in the kitchen, so we immediately started thinking about knocking down walls, and with a property of this vintage, it's been a case of lavishing lots of TLC on it for the past four decades," says Trish.

"We first got in touch with Margot around 12 years ago when Chelsea McLaine had just opened. We needed new curtains, and with such substantial windows, I didn't want to make any costly mistakes."

"After all these years, Margot really knows my style, but still encourages me to try out new ideas."

Three years ago, Trish invited Margot and her team to alter and upgrade the manse's network of bathrooms, and add a more contemporary edge to the traditional reception hall. They dispensed with Artex walls and ceilings, replastered, then introduced a neutral colour palette, injecting colour and modernity with rugs and accessories.

"The hall is a delightful space, with a curved wall on the stairs," says Margot, "and we created more space by incorporating what had been the parishioners' waiting room."

"We were delighted when Trish asked us to refurbish her kitchen, sitting and dining-room at the beginning of this year. There was no set brief, as after 12 years, you pretty much know the sort of thing they are going to like. It was a straightforward process, as the Dalziels are delightful people to work with and always receptive to ideas."

Originally a cottage joined on to the manse, the kitchen and living-room area, which the Dalziels had knocked through 35 years ago, lacked warmth and light. Margot addressed this by installing under-floor heating under the kitchen tiles and carpeting the hardwood floor in the living area.

"When we refurbished the kitchen last January, I told Margot I wanted a modern bright room," says

'With a property of this vintage, it's been a case of lavishing lots of TLC on it for the past four decades'

Trish, "and the sitting area needed warmed up as it is all outside walls. I also wanted more storage space in the kitchen. I had been mulling over it for two years, looking at magazines for inspiration."

"I eventually decided that I wanted white cabinetry and a larger, sleeker Aga to replace the classic green model. Now I just love my kitchen."

With a black and chrome Aga, and white high-gloss cabinetry in Parapan, which comes with a durable finish and is used in-store by Chanel, the kitchen is a symphony of streamlined ingenuity. Work surfaces come in a deft combination of Zodiaq, with solid walnut on the wall-hung cabinetry.

A half-height wall, crafted by Chelsea McLaine's cabinet makers, delineates the space between the kitchen and sitting area as well as concealing kit such as the laptop modem and sound system, while incorporating a small work desk.

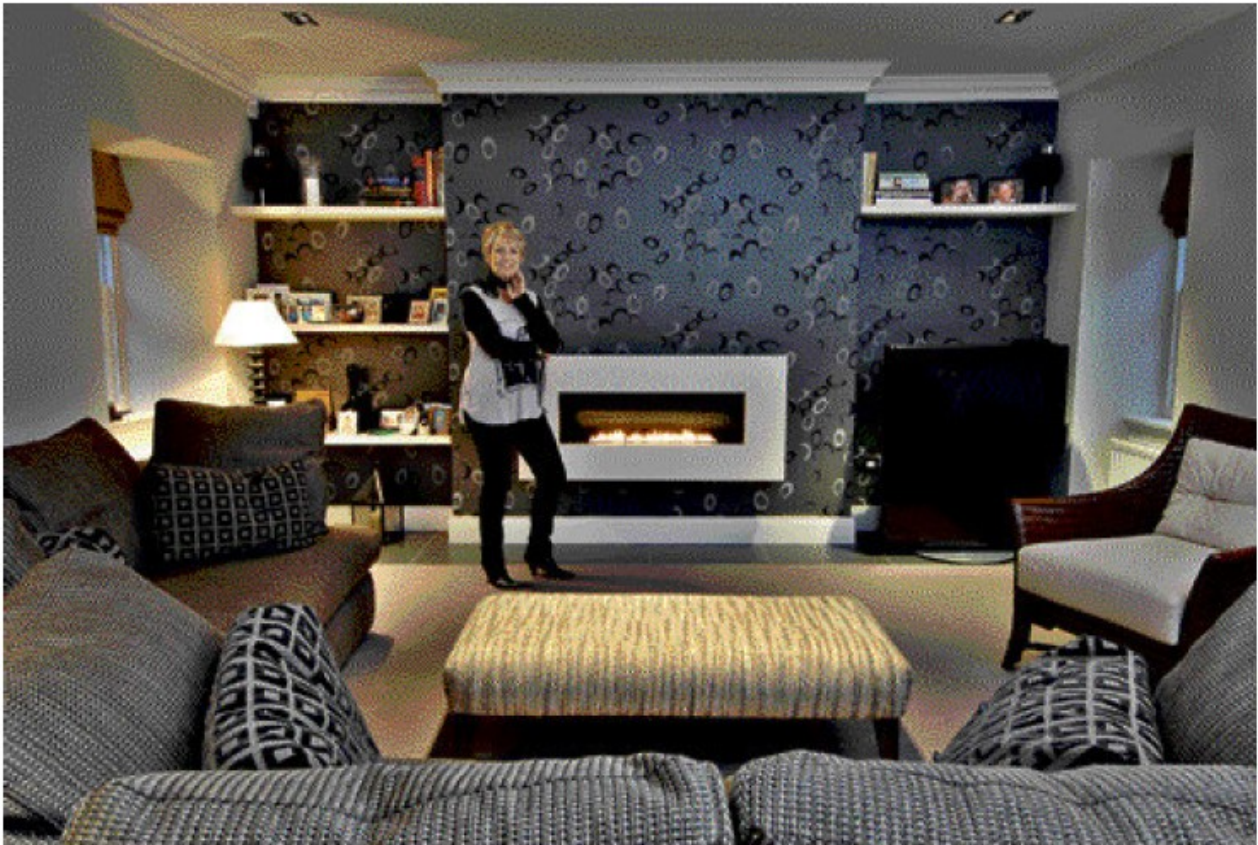
Out went the unsightly fireplace in the living area, to make way for a wall-hung flueless X-fire from Acquisitions, while the Ochio Italian lighting system can be programmed to pre-set ambient moods.

The niche dining zone demanded a custom-made table to fit the space, with upholstered dining chairs in green and taupe velvet from Zoffany. Margot and Trish agree that the bespoke light above the dining table was a particular extravagance which more than justifies the expense.



This page, clockwise from top left: the new entrance hallway; a beautifully designed bathroom; sitting-room; the formal dining-room. Opposite page from top: Trish beside the flueless X-fire in the sitting-room; one of the en-suite bedrooms upstairs





As for furniture, Trish believes you can inject a traditional home with contemporary elements if you opt for well-crafted pieces. The sitting-room sofa is upholstered in Nobilis fabric, while the wallpaper is by Elitist.

"In the other rooms, particularly the drawing-room much of the furniture is from my parent's home, as I'm too sentimental to give them away - things like cabinets and oak tables which complement the Adam fireplace, but with modern sofas providing a contrast," says Trish.

"The formal dining-room has a large bay window with aubergine striped wallpaper and curtains in heavy silk, and I found the dining table in an Edinburgh antique shop. It was originally a baker's table



which had been painted cream, so I had it dipped. It's not a grand table but I love it"

Upstairs, it is a mix of eras in the split-level master en-suite bedroom, which also incorporates a sizeable dressing-room. The antique wooden chair is yet another family heirloom, reupholstered by Margot and re-covered in a rich embossed fabric in a raspberry shade. Two on-trend purple rugs, and silk window treatments with extravagant fringes, soften the rich tones of the original pine floorboards.

With eight grand-children, Trish says the house is rarely empty, although everyone tends to congregate in the kitchen. *

Chelsea McLaine, 157 Mingvie Road Bearsden Glasgow
(0141-942 2833, www.cheslaimcaine.co.uk)